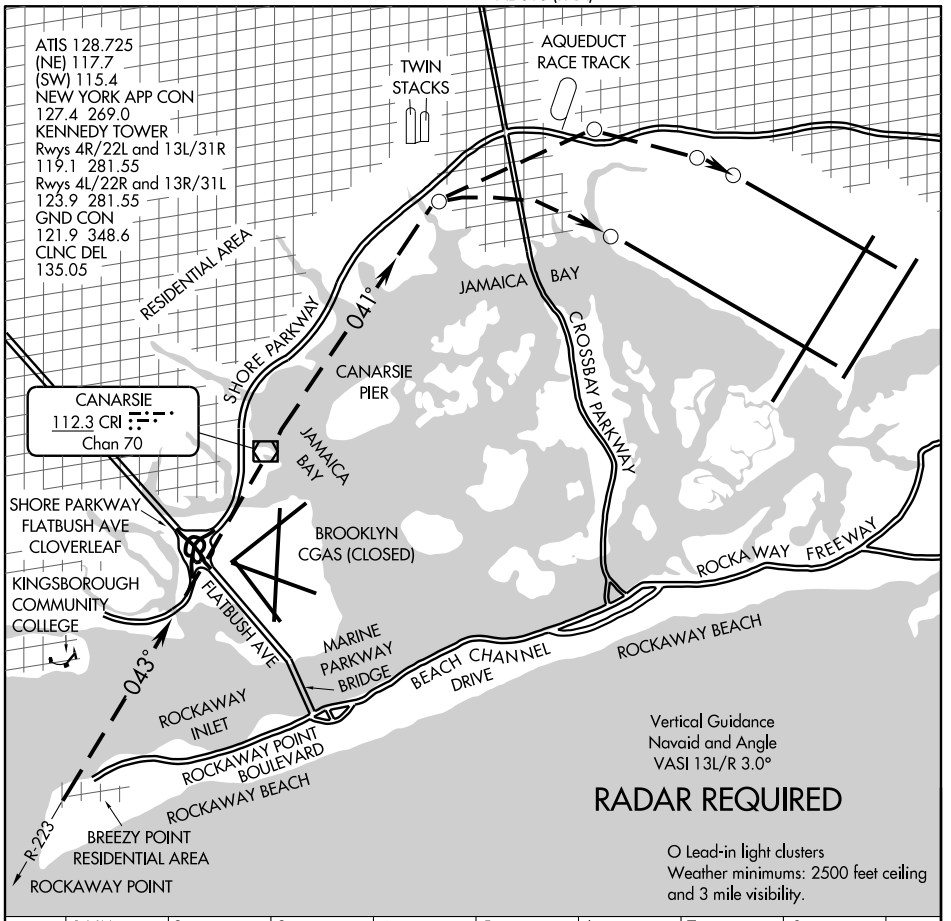


# PARKWAY VISUAL RWY 13L/R

AL-610 (FAA)

NEW YORK/ JOHN F. KENNEDY INTL (JFK)  
NEW YORK, NEW YORK



NE-2, 23 NOV 2006 to 21 DEC 2006

NE-2, 23 NOV 2006 to 21 DEC 2006

## RADAR REQUIRED

Vertical Guidance  
Navaid and Angle  
VASI 13L/R 3.0°

O Lead-in light clusters  
Weather minimums: 2500 feet ceiling  
and 3 mile visibility.

1 NM	2	3	4	5	6	7	8
------	---	---	---	---	---	---	---

### PARKWAY VISUAL RUNWAY 13L/R

When cleared for Parkway Visual to Runway 13L/R maintain at or above 2000' until abeam Rockaway Point. Remain west of Rockaway Point, thence east of Kingsborough Community College. Remain east of the Shore Parkway. Cross Brooklyn Coast Guard Air Station at or above 1500'. Remain east of the Shore Parkway until Canarsie Pier.

Runway 13R continue descent between the Canarsie Pier and Twin Stacks.  
Runway 13L continue descent after passing the Twin Stacks.

# PARKWAY VISUAL RWY 13L/R